

## How to update the PLC firmware

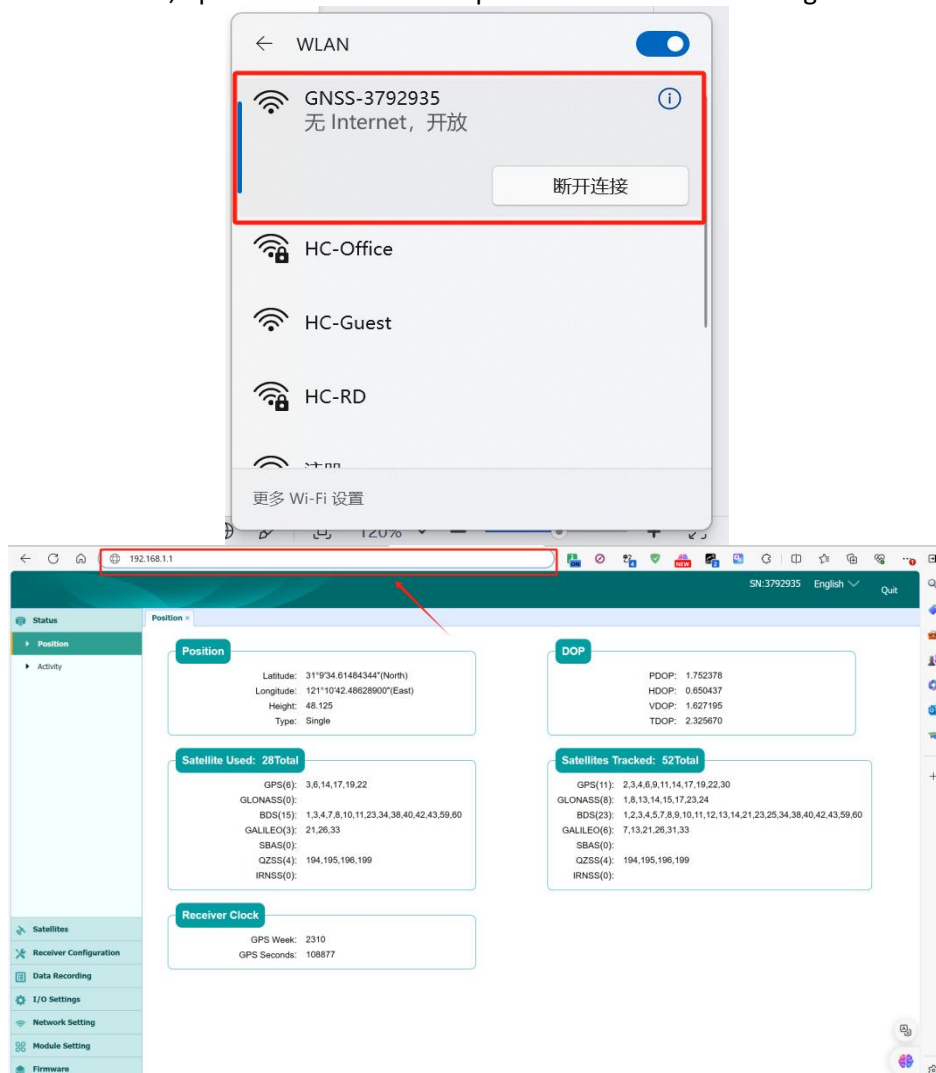
### Introduction

With the PLC controller, it serves two roles in the whole steer ready system.

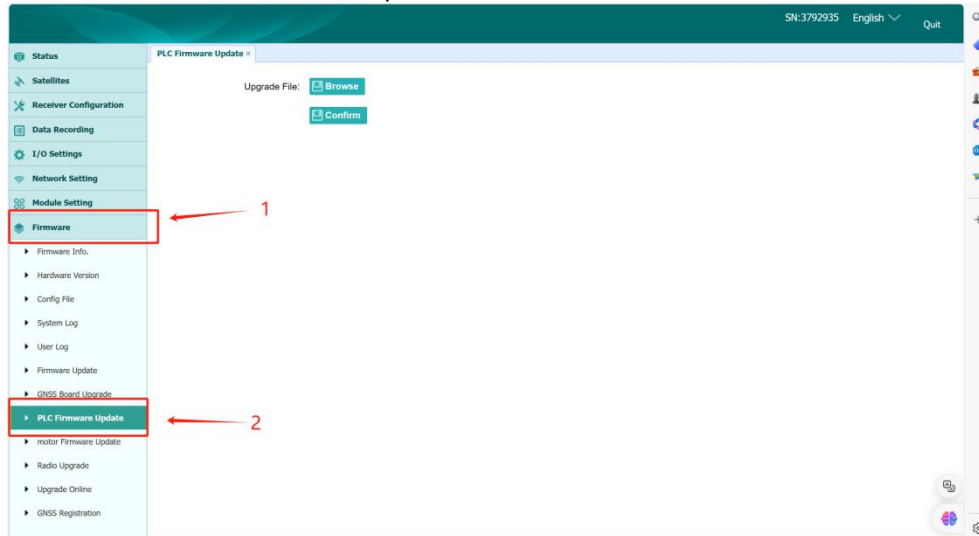
1. Collect data from the oil pressure sensor and angle sensor on the vehicle and send it to the receiver.
2. Receive the electromagnetic valve steering command sent by the receiver and drive the vehicle steering valve.

### Steps

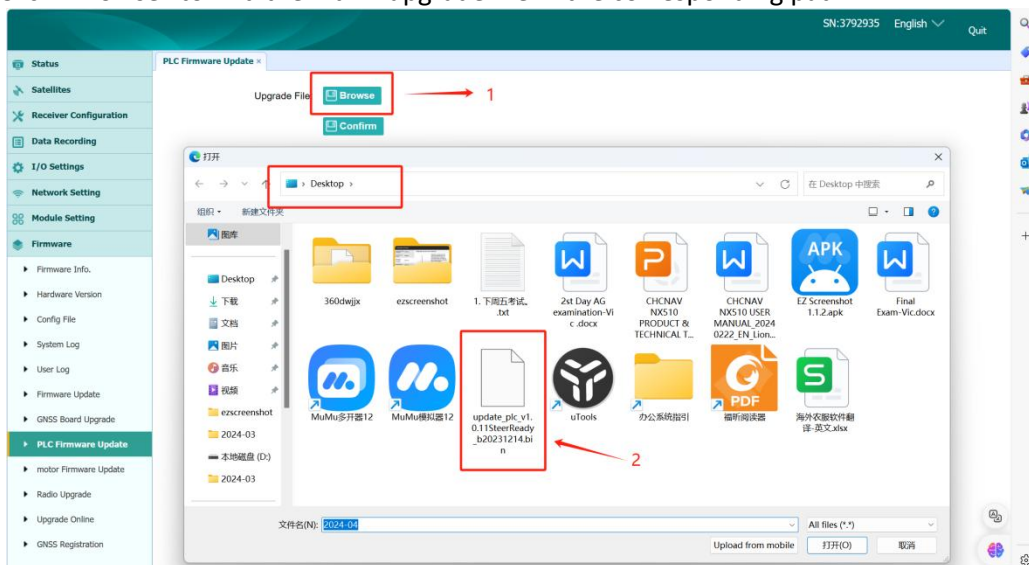
1. Connect PA-3 wifi, open the browser and input "192.168.1.1" URL to log in web interface.



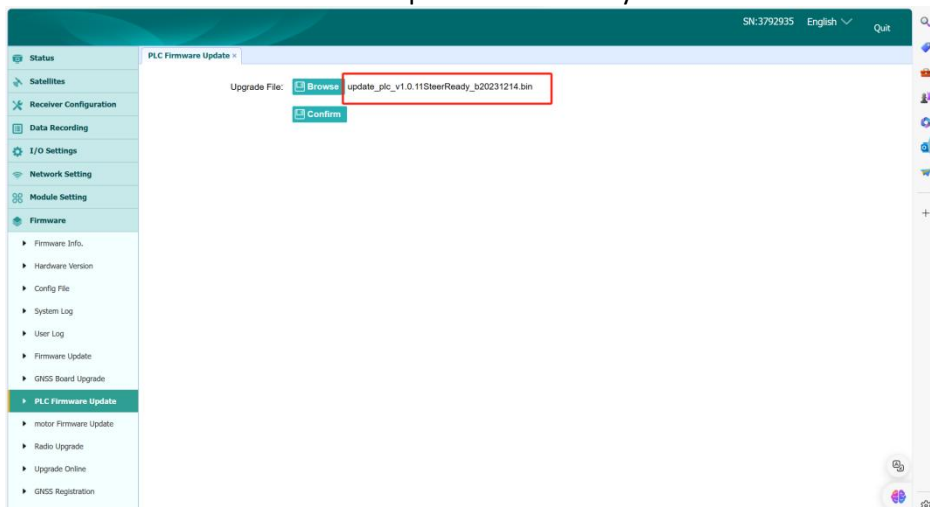
2. Click "Firmware"- "PLC Firmware Update"



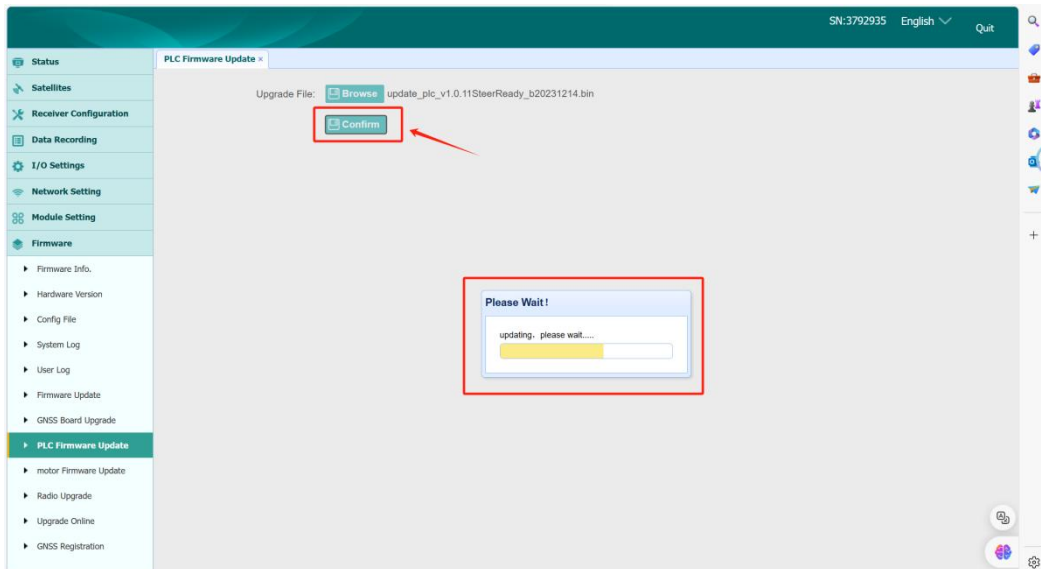
3. Click "Browse" to find the ".bin" upgrade file in the corresponding path.



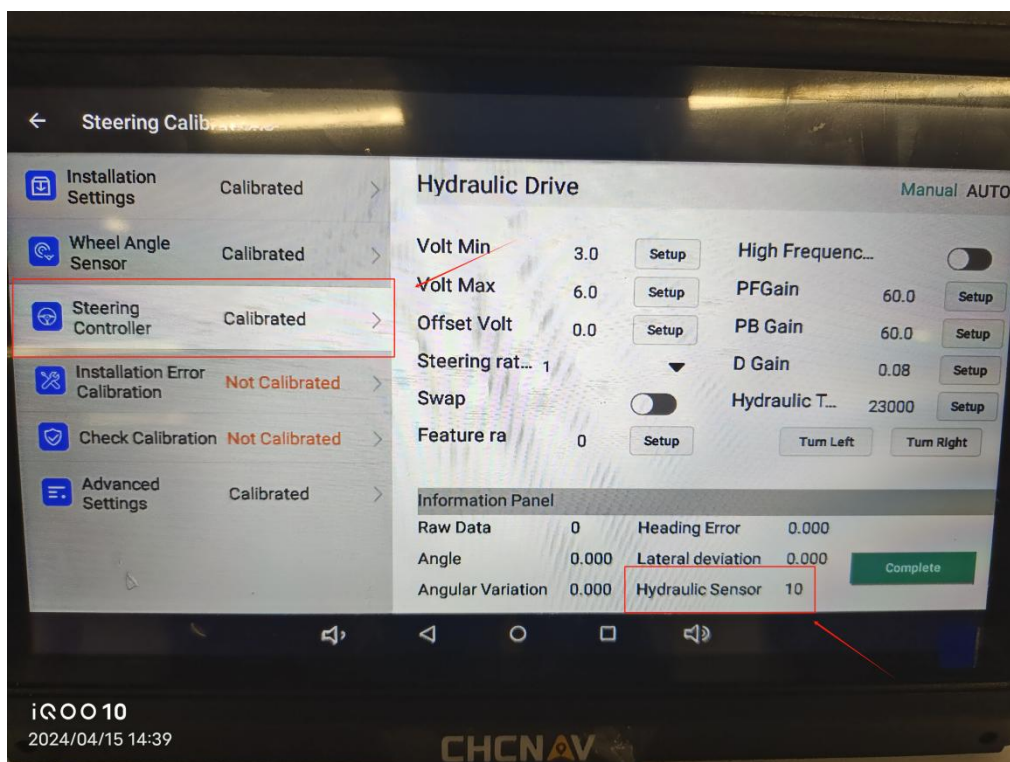
4. Double click the file and make sure it uploads successfully.



- Click "Confirm" then the system will update automatically. Just wait a few minutes and ensure the progress bar is running normally.



- After the upgrade is successful, the PA-3 wifi will disconnect automatically and you can enter the "Steering Calibration"->"Steering Controller" interface to check whether the "hydraulic sensor" value is over or equal to 18.



## **CHC Navigation**

Building C, 577 Songying Road, Qingpu, District,  
201702 Shanghai, China

Tel: +86 21 542 60 273 | Fax: +86 21 649 50 963

Email: [sales@chcnav.com](mailto:sales@chcnav.com) | [support@chcnav.com](mailto:support@chcnav.com)

Skype: chc\_support

Website: [www.chcnav.com](http://www.chcnav.com)